

35th Ave NE and NE 80th St

Pedestrian Crossing Light or Other Crossing Aid

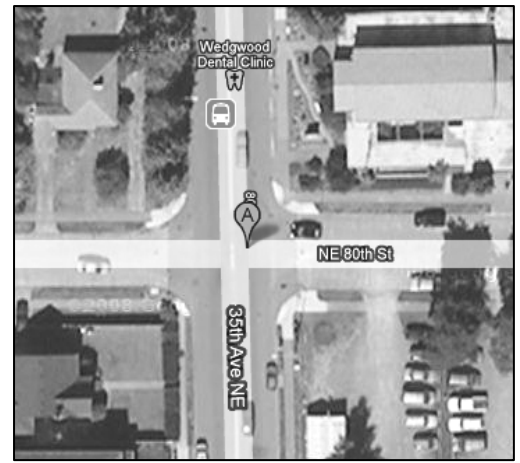
Project ID # 2007-429

Type of Improvement: Pedestrian Improvements

Approximate Length: Not Applicable

Neighborhood: Wedgwood

Street Classification: 35th Ave NE – Minor Arterial,
NE 80th St - Local Street



Applicant Description of Problem and/or Project

35th & 80th is an important crossing area for many reasons, including:

- 80th across 35th is part of a signed cycling route. The intersection is identified in the Seattle Bicycle Master Plan for a pedestrian/cyclist activated crossing light.
- 80th across 35th is part of a mapped walking route in the new map of Northeast Seattle Walking Trails, connecting Picardo P-Patch, Dahl Playfield, and University Prep to the west with Thornton Creek School (and, further, Magnuson Park) to the east.
- Wedgwood Presbyterian Church on the NE corner is our de facto community center with meetings and activities every day of the week.
- The open space on the SE corner, sometimes referred to as the Wedgwood Commons, hosts activities such as summer fruit sales, Christmas Tree sales, potlucks and picnics, community yard sales, even a solar cookout.
- The busy post office just to the south generates a lot of pedestrian crossings of 35th.
- There are metro bus stops on two corners and a Microsoft Connector stop on a 3rd corner.

Crossing 35th at or near 80th Street is currently problematic because:

- Particularly during commute hours, traffic volume is high.
- The intersection is in the middle of a 10-block stretch of 35th with no traffic lights and vehicle speeds are often high.
- There are often two lanes of cars going in one or both directions; if cars in one lane stop, cars in other lanes may not. In the recent past, one car rear-ended another that had stopped to let a pedestrian cross. Close calls are frequent.
- There is currently no crossing aid (i.e., no painted crosswalk, crossing sign suspended over the arterial, crossing light, pedestrian island, etc.)

Potential Solution and/or Comments:

Many feel that a pedestrian-activated crossing light is a good solution here, where there are up to two lanes of traffic in each direction. There is precedent for this at 89th & 35th at Our Lady of the Lake church and school.

Neighbors are also open to other solutions that SDOT experts may recommend.

Challenges/Tradeoffs:

- SDOT will need to evaluate whether a pedestrian signal is warranted at this location [and, if not, explore alternatives].
- No site visit was conducted for this site.

Preliminary Range of Cost: \$ 100,000 to \$ 140,000 for a pedestrian light, tbd for alternatives