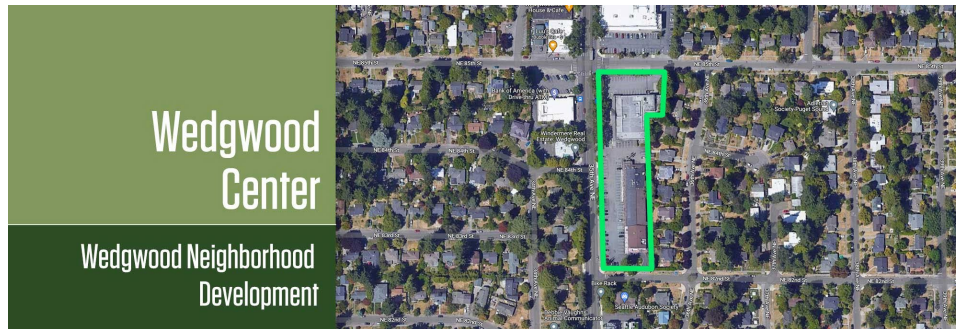


March 24, 2023

Dear Neighbor,

Security Properties, a Seattle based real estate company, is designing a new mixed-use residential project at 8400 – 35th Avenue NE, Seattle, 98115 (Wedgwood Center). Below is a site map of the location.



We are just in the conceptual design phase and wanted to make you aware of the project and begin to solicit community input. As a company rooted in Seattle, we believe that great projects are informed by neighbors and the local community. Many of the building's compelling features will be outcomes of coffee conversations, community meetings, and neighbor engagement.

The proposed 5-story, mixed-use development will bring back a larger 38,000 corner grocer, build new commercial space for Home Street Bank with 12,000 additional square feet of new retail, and approximately 285 apartment homes with an estimated 343 underground parking stalls.

We have been in conversations with the current retail tenants and all of them are welcome to be in the new project if they want to return. We are committed to placing authentic, neighborhood retail in all our mixed-use projects.

Through the design, entitlement, and construction phases, we will have a project website that will be updated with new details and visuals. Currently, it has a list of the proposed building uses and massing design features that we are exploring. It also has links to the City Design Review process and the Future 35th Avenue NE Plan, which we are using as a design tool. Please visit the site at <https://www.spwedgwood.com> or use the following QR code.



If you email us via the website, please be aware that your comments or questions can be made public by the city of Seattle as part of the Design Review public process. Below is the project number and links to city associated pages, for anyone who wants to follow the project through entitlement.

Project Number: 3039950-LU

Department of Neighborhoods Blog Link: [drearlyoutreach \(seattle.gov\)](https://drearlyoutreach.seattle.gov)

Seattle Services Portal: [Seattle Department of Construction & Inspections - SDCI | seattle.gov](https://seattle.gov/sdc)